

CON Inventory Work Plan

14th March 2016

Background

‘Implementation of the SAON Strategy’: “The first task of the Committee will be to develop and implement a plan for the establishment of an inventory and related gap analysis of circum-Arctic observational and monitoring assets”

EU-PolarNet is a Coordination and Support Action under the EU Horizon 2020 programme. One of the deliverables is: “inventory of existing monitoring and modelling programmes”

There tier approach

1. State of National Inventories and reporting of information about Arctic programs, networks, projects and platforms
2. Detailed inventory within a specific Arctic theme
3. Inventory templates/parameters

Timeline 2015-2016

November 2015:

- ☐ Approve this document (CON meeting)
- ☐ Develop and circulate template for 2.1 (Secretariat)
- ☐ Discuss theme for 2.2

December 2015:

- ☐ Collect information for 2.1 (CON members)
- ☐ Update information in SAON PD (CON members)
- ☐ CON meeting to decide on theme for 2.2 and develop plans for this
- ☐ CON meeting to outline document on existing inventory capabilities and the need for additional membership and resources. For the SAON Board

January 2015:

- ☐ Submit information for 2.1 to Secretariat (CON members)

February 2016:

- ☐ CON meeting to finalise the document on existing inventory capabilities and the need for additional membership and resources.
- ☐ Compile and upload information for 2.1 (Secretariat)

March 2016:

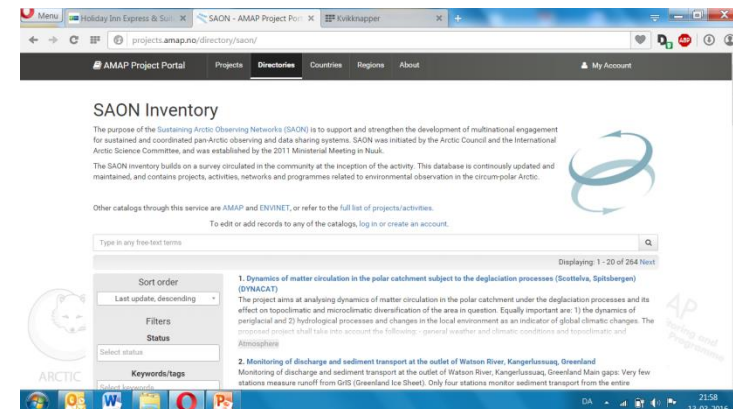
- ☐ Present a first version of 2.1 and an updated SAON PD for the SAON Board
- ☐ Face to Face meeting to review inventories and plan forward

1.a State of National/Organisational Inventories

- Does national inventories exist?
- If yes, please briefly describe these, including
 - Scope/Coverage (geography, themes, temporal)
 - Do the inventories cover Arctic programs, networks, projects or platforms? Other?
 - Is the information in the inventories openly accessible? If yes, is the information accessible to an automated harvesting process?
 - Contact information, including URL
- If no,
 - Do you have plans for establishing national inventories?
 - What will be the scope/coverage (geography, themes, temporal) for these?

1.b Inventories of National Observational Assets

- Networks, platforms, programs, projects.
- Simple template (metadata):
 - Title
 - Description
 - Geographical coverage
 - Contact information
 - Start/end year
 - URL
- Update historical information:



2. Thematic Inventories

CBM Atlas

Atlas of Community-Based Monitoring
& Indigenous Knowledge in a Changing Arctic

Focus
About


Welcome
Login

Circumpolar Arctic

+
-

Base Layer
World Basemap

Overlays
☒ State/Province/Territory Boundaries
☒ Projects
☒ CBM Partner Communities






search the atlas

Welcome to the Atlas of Community-Based Monitoring in a Changing Arctic. Arctic communities are actively involved with observing social and environmental change; this atlas was designed to showcase the many community-based monitoring (CBM) and Indigenous Knowledge (IK) initiatives across the circumpolar region.

If you are involved with a CBM initiative, we hope you will consider joining the atlas.

This site also features a map of Inuit Mental Health and Wellness initiatives.

The atlas was brought to you by these partner institutions:

<http://www.arcticcbm.org/index.html>

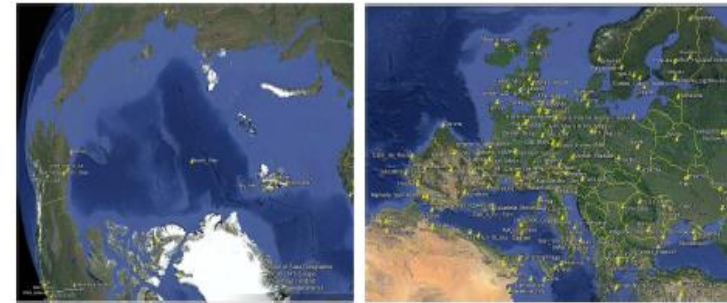
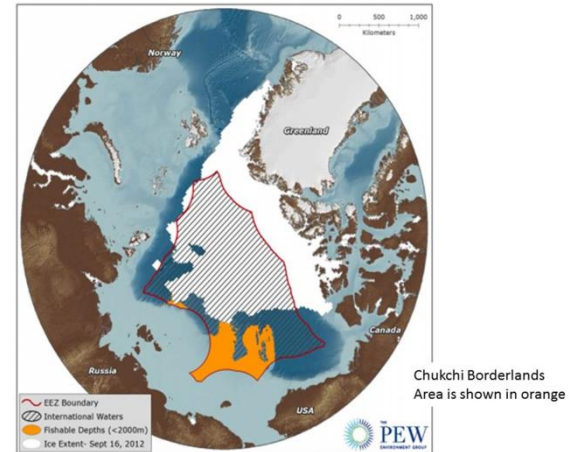
Inuit
naulicarvinat

SAON

Made with Nunalit

2. Proposed Themes

- Arctic Fisheries: ‘Scientific Experts on Fish Stocks in the Central Arctic Ocean’ and ICES/AMAP/CAFF/PAME Workshop on Integrated Ecosystem Assessment Central Arctic Ocean (WKICA)
- Atmosphere: With WMO and IASOA
- Global Terrestrial Network for Permafrost



3. Inventory templates/parameters

- Type of activities/scope to include in a monitoring inventory
- Which programs/projects/networks are considered 'monitoring' (e.g. collection of data over 3 years)
- Time stamp, how far back in time? Historical monitoring programs/projects/networks
- Templates/profiles
- The use of dictionaries/keywords
- Other

Networks

Definition: A cooperation between two or more observational institutions, infrastructures or sites. They are typically spatially distributed and are collaborating to collect information about the environment etc. They share (at least to some extent) objectives and protocols and they exchange information. Typical SAON related examples are IASOA, CircHob, INTERACT, GTN-P, and SIOS. The information (metadata) to organize in a catalogue/inventory for Networks are name, scope, members, etc.

Field/column	Description	Format
Title	The title of the network	Text
Description	Network description	Text
Geographical coverage	The geographical coverage of the network	Text
National/International	Is the network national/international	Category: National/International
Institutions involved	Institutions involved	Text
Contact information	Contact information	Text
URL	URL	Text (URL)

State of National/Organisations' Inventories

- National written reports
 - Canada (w)
 - Denmark (o)
 - Finland (w)
 - Italy (w)
 - Norway (w)
 - Poland (o)
 - Russia (o)
 - Sweden (o)
 - USA (o)
- Organisations' reports
 - CBMP (o)
 - ICC (w)
 - INTERACT (w)
 - WMO (w)

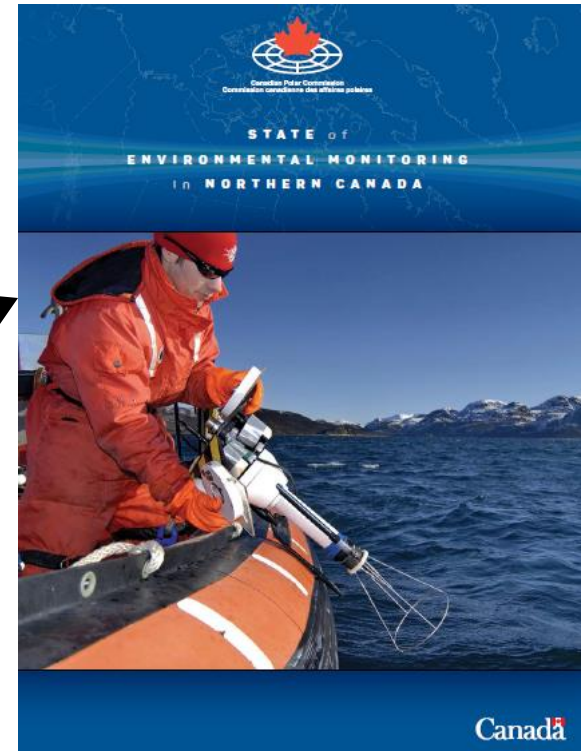
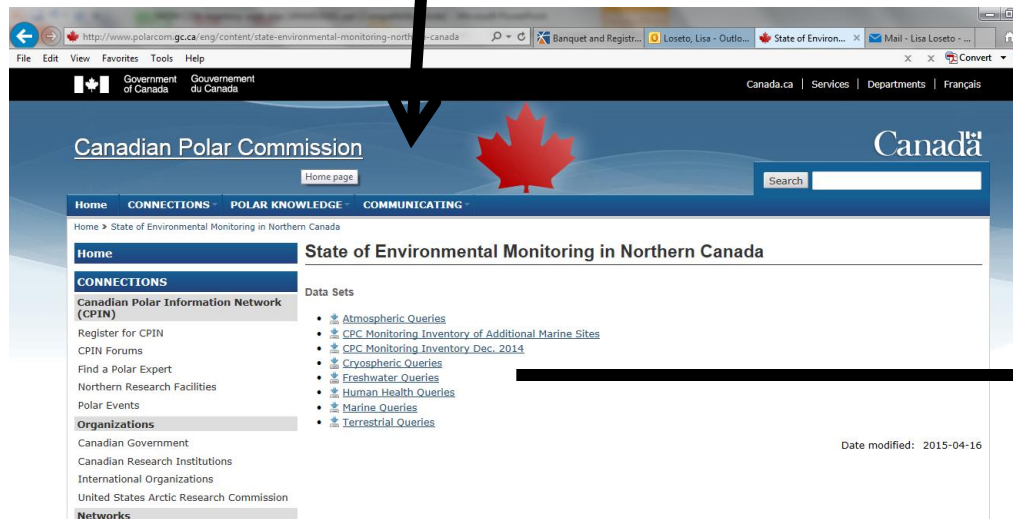
Written report contents

	Coverage				Information provided		Structured information exists
	Projects	Networks	Platforms	Programs	Metadata according to template	Granted access to structured information (database)	
Canada	Y	-	-	-	(Y)	Y	Y
Norway	Y	Y	Y	Y	?	?	Y
ICC	-	-	-	Y	(Y)	-	Y
WMO	-	-	Y	Y	(Y)	-	Y

Membership to CON

- Requires some attention
 - currently a mix of representatives from government, academia that may not be in a position to reflect national Inventory processes and/or agencies
- Needs for CON membership: member should be in a position to reflect national interests and activities under Arctic Observing Inventories
- Highly motivated to be able to network both at the national level (within and among agencies, universities, networks) and Internationally within CON
- Ideal is linked with a SAON national Committee team

SAON
SUSTAINING ARCTIC
OBSERVING NETWORKS

[illegible]

Timelines (2016)

- CON members to submit information
- CON meeting to finalize the document on existing inventory capabilities and the need for additional membership and resources.
- Present to Board