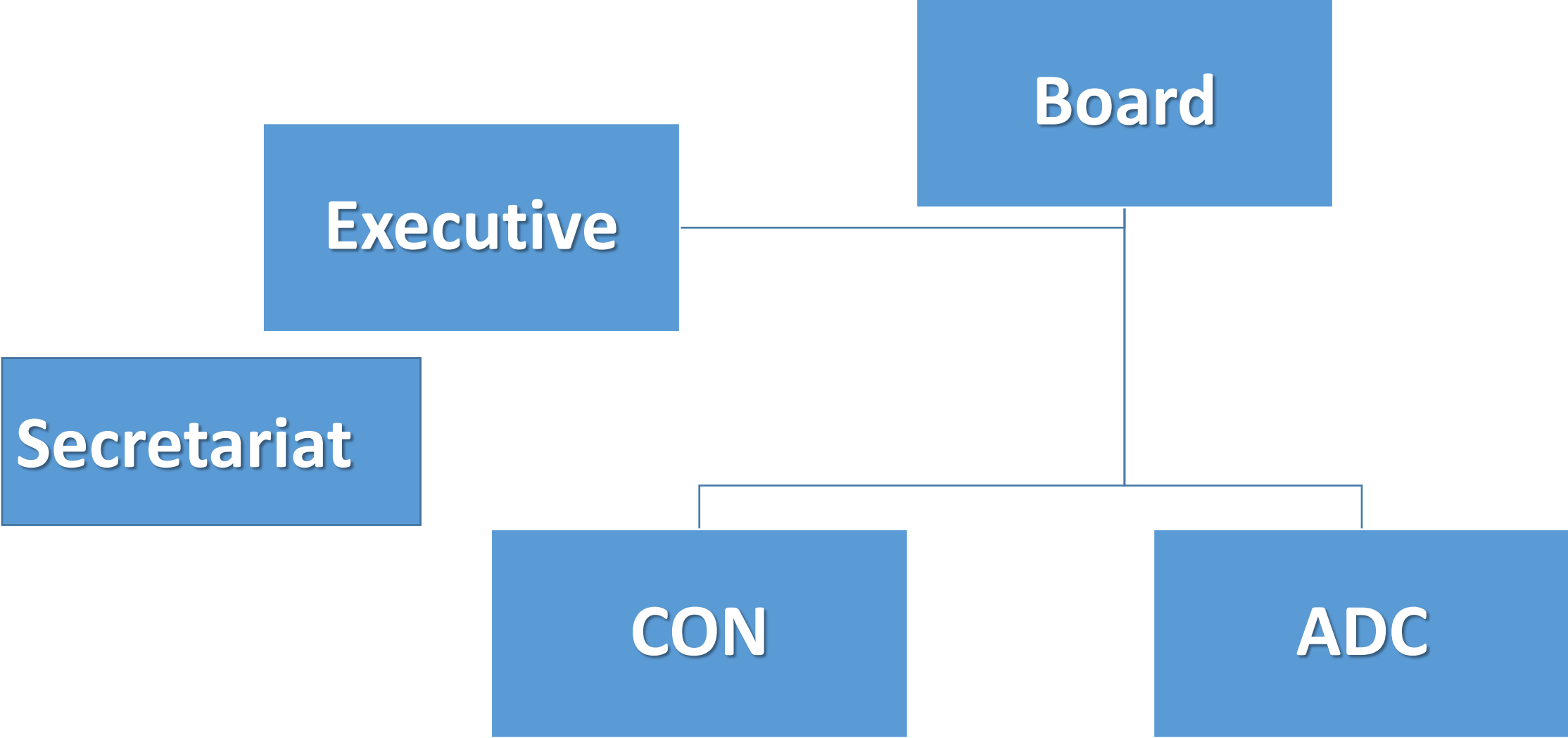


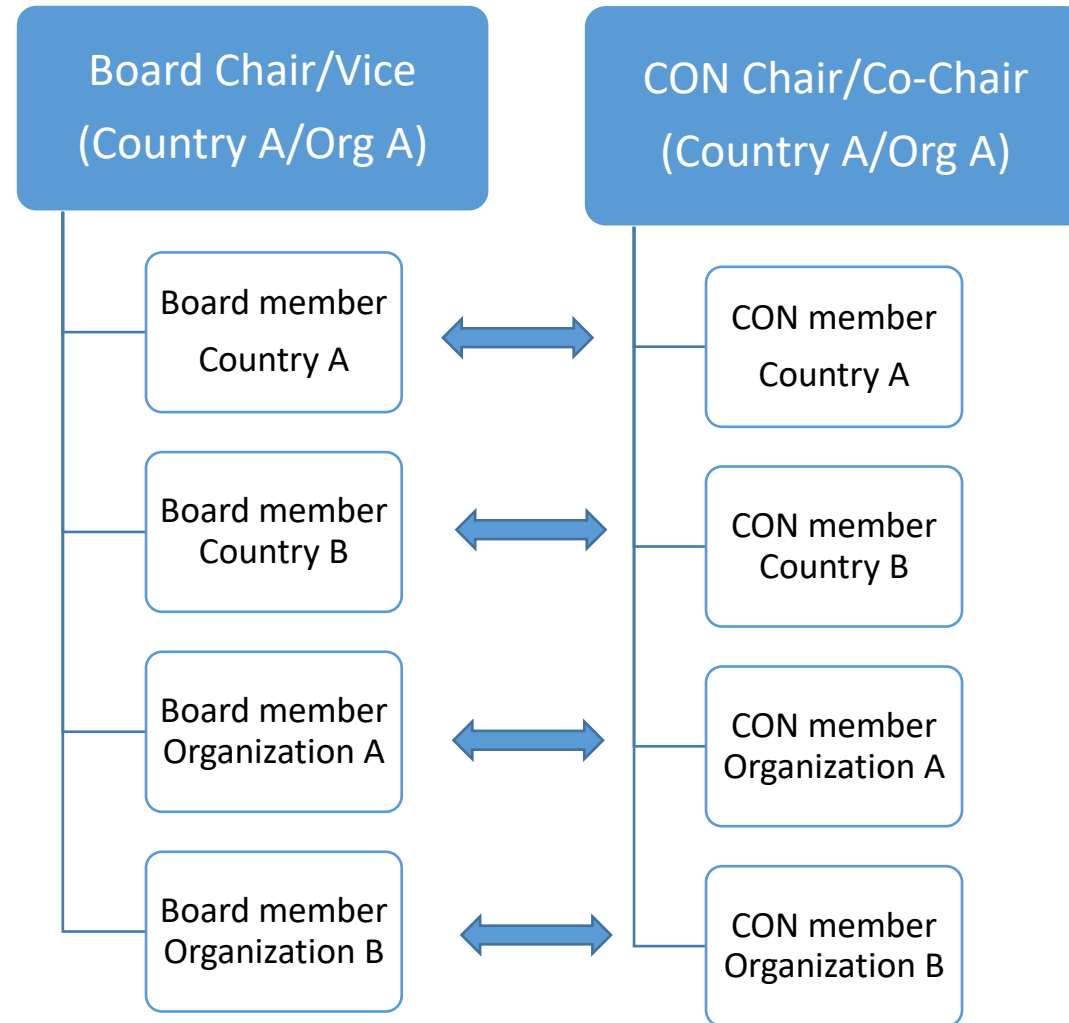
Architecture considerations for SAON CON

Lisa L Loseto

Structure of SAON

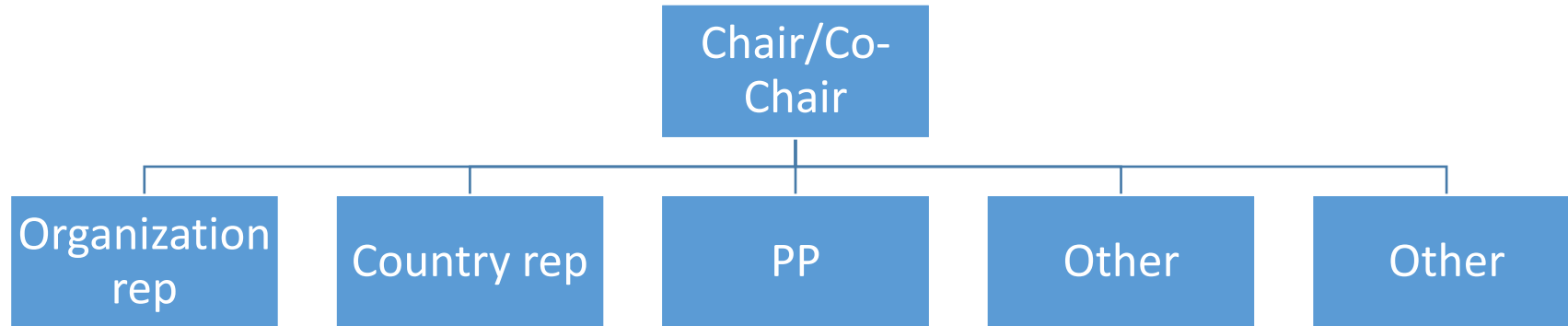


Partnered/Paired Architecture: CON & Board - delegated authority for Country/Org

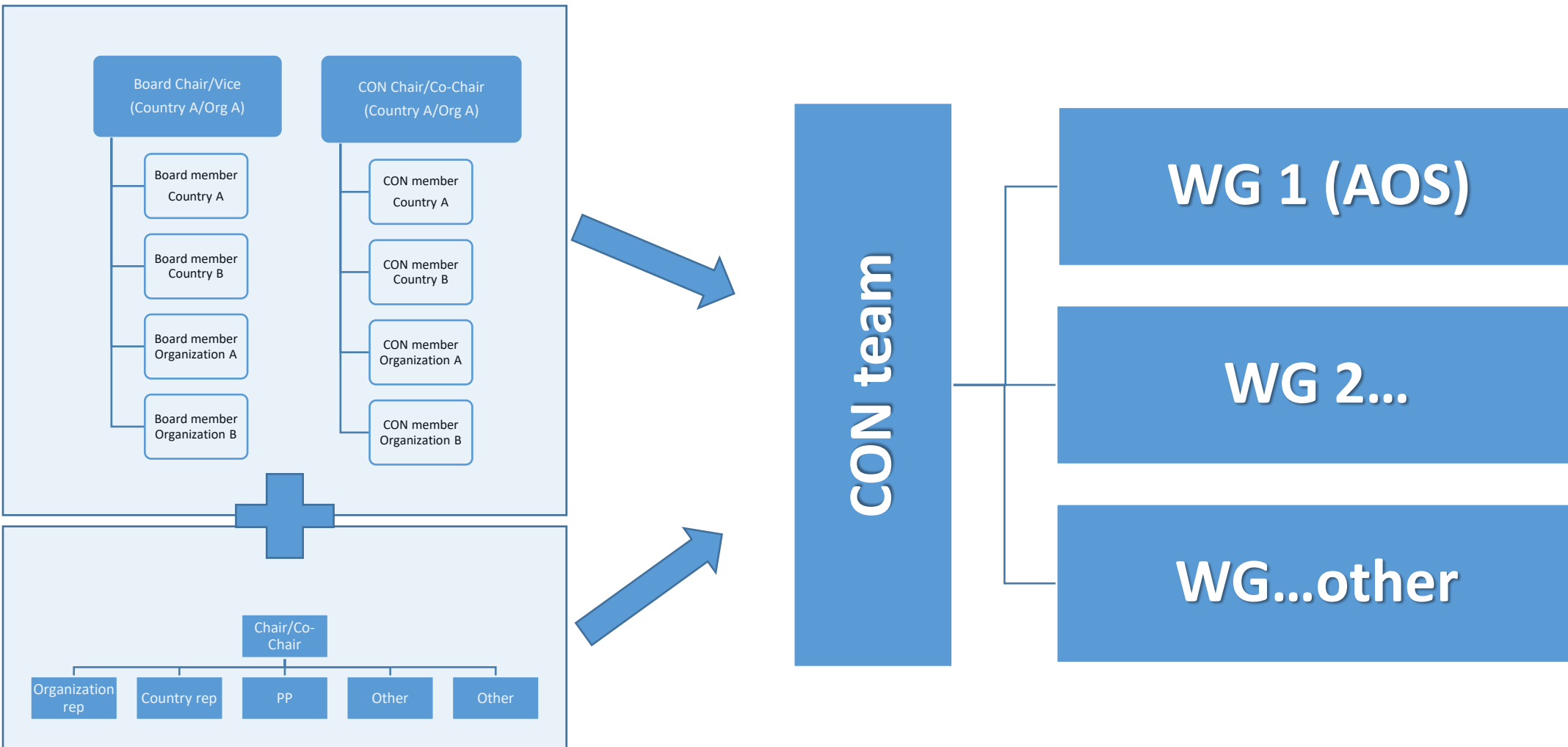


Non-Structured: CON

- Attract Self motivated
- A component of ADC



Combination, alternation & Working Group Structure (Flexibility to support multiple/changing focus)



3 Proposed Architectures for consideration

Structured/partnered

- Similar to current structure
- Pro: linked to authority/ inventory potentially funds
- Con: mixed participant representation (current mix of experts)

Non Structured

- Similar to ADC (has mixed model)
- Pro: attract self motivated
- Con: potential lack of access to funds or inventory/data

Structured/non Structured W Working Group Focus

- Can fit either architectures and flexible needs
- Pro: can be flexible/responsive
- Con: may require the chair or CON to be more active to direct activities of the WG's